

New York Transco

Building a Clean Energy Future Together

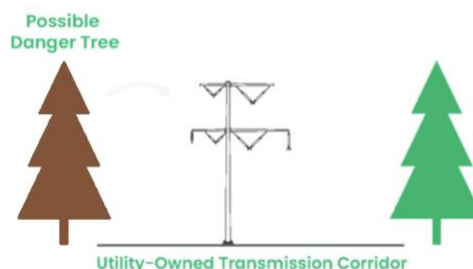
November 22, 2022

Dear Neighbor:

New York Transco (NY Transco) continues to advance the New York Energy Solution (NYES), a transmission line and station modernization project from Schodack to Pleasant Valley. Earlier this year we completed and energized a section of the NYES transmission line near your property. We are now undertaking danger tree assessments and removals as part of our Operations & Maintenance Vegetation Management Plan. You are receiving this letter because danger tree(s) were identified on your property for removal by NY Transco.

What is a danger tree?

A danger tree is a tree in danger of hitting a critical electric transmission asset should it fall. Danger trees typically are identified by having certain defects such as rot, splits, abnormal growth, poor root structures or soil conditions and/or are dead or dying. Danger trees pose a threat to the nearby transmission lines and the ability to deliver energy to customers.



Why do danger trees need to be removed?

Electrical outages are often caused by nature, and specifically, tree contact with wires. It is a requirement by the North American Electric Reliability Corporation (NERC) and the Federal Energy Regulatory Commission (FERC) that transmission operators like NY Transco safely maintain and operate transmission lines without interruption. Danger trees are required to be removed to maintain safe and continual operation of the electric lines.

New York Transco™

How are danger trees identified?

NY Transco utilizes a Professional Forester to conduct visual assessments into neighboring properties to determine the type, health, age and height of nearby trees that have the potential of falling on the transmission lines. Those trees are designated danger trees and slated for either further investigation or removal by NY Transco or its contractors.

Does Transco have the rights to remove danger trees on private property?

Yes, per our real estate agreements with National Grid for this transmission corridor, NY Transco maintains the rights to remove neighboring trees outside of National Grid's land that pose a danger to the transmission lines. The goal is only to remove trees that pose a potential threat to the transmission lines in the area with as little disturbance as possible.

What is the process and timing for removing danger trees?

This letter serves as the notification for advancing danger tree removal on your property adjacent to the transmission corridor. The next step is for NY Transco or its contractors (a division of Asplundh Tree Expert) to visit your property to further examine and flag the danger tree(s) needed for removal – estimated to begin early December 2022. Following this, professional tree crews would then come back to complete removals and haul away debris – estimated to begin January-March 2022. Upon request, wood from the trees can be left for the property owner's use.

Who do I contact with questions?

Please call NY Transco's toll-free hotline at 1.800.897.0179.

Thank you in advance!



Shannon Baxevanis
Communications & Stakeholder Lead
New York Transco LLC